

# LEESBURG PRESBYTERIAN CHURCH

LEESBURG, VIRGINIA

1804



July 24, 2011

*Standing on the past . . .  
Reaching for the future*

Presbyterian Church (U.S.A)

17th Sunday of Ordinary Time

10:00 a.m.

When the church bell is rung let us be silent for worship.

*\*Please stand if able*

PRELUDE

*Immortal, Invisible, God Only Wise*

arr. Howell

### THE GREETING OF GOD'S PEOPLE AND ANNOUNCEMENTS

*Wherever you may be in the journey of faith, Leesburg Presbyterian Church welcomes you. We are a community where persons from different faith backgrounds and understandings find unity in the wide embrace of Christ's love and call to service. If you are passing through, we extend God's blessing to you as you continue on your way. If you are seeking a home, we invite you to join us in the adventure of serving Jesus Christ in a challenging world.*

\*INTROIT

*Praise, Praise, Praise the Lord*

Trad. Cameroon

Praise, Praise, Praise the Lord

2035



WORDS: Trad. Cameroon  
MUSIC: Trad. Cameroon

AFRICAN PROCESSIONAL  
Irregular

\*CALL TO WORSHIP

from Psalm 104

Bless God, O my soul, God has great wonders for us.

**The words of God are bountiful! The earth is full of God's creation!**

The hands of God open---we are filled with good and wonderful life.

**May we rejoice in your works, God of Glory, You endure forever in this creation.**

**Sing to God as long as we live! Let us rejoice in God's everlasting blessings!**

\*HYMN 483

*Sing Praise to God, Who Reigns Above* MIT FREUDEN ZART

## **PRAYER OF CONFESSION (Unison)**

**Holy God, our lives are far from holy. The thoughts we have held in secret have sometimes erupted into hurtful words and deeds. We have foolishly given in to pessimism and suspicion. We have foolishly resented people whose lives seem easier than our own. We hate the thought of sharing all those things we have worked so hard to possess. O God, we need your wisdom in order to live peacefully within ourselves. Grant us wisdom. Grant us peace.**

(silence is kept)

**Amen.**

## **WORDS OF FORGIVENESS**

**\*CONGREGATIONAL RESPONSE 485**    *To God Be the Glory*                      Crosby/Doane

**\*THE PASSING OF THE PEACE**

## **TIME WITH THE CHILDREN**

**NEW TESTAMENT LESSON**    Matthew 13: 24-30, 36-43                      Pew Bible Pg. 14

**SERMON**                                      "It's Hard to Tell"    Rev. Deborah Dodson Parsons

**ANTHEM**    *Grace*    Hawthorne

**\*AFFIRMATION OF FAITH—THE APOSTLE'S CREED**

**I believe in God the Father Almighty, Maker of heaven and earth. And in Jesus Christ his only Son our Lord; who was conceived by the Holy Ghost, born of the Virgin Mary, suffered under Pontius Pilate, was crucified, dead and buried; he descended into hell; the third day he rose again from the dead; he ascended into heaven and sitteth on the right hand of God the Father Almighty; from thence he shall come to judge the quick and the dead. I believe in the Holy Ghost; the holy catholic church; the communion of saints; the forgiveness of sins; the resurrection of the body; and the life everlasting. Amen.**

## **THE PRAYERS OF THE PEOPLE and THE LORD'S PRAYER**

### **OFFERING**

**OFFERTORY**                                      *Shout to the Lord*

**\*THE DOXOLOGY #592**

**\*OFFERTORY PRAYER**

**With joyous praise and dancing spirits, we dedicate this offering, acknowledging our covenant responsibility to share your word and love all your people. Thank you for the wisdom and insight we have received. Help us now to live according to the best we know, in Jesus' name. Amen.**

**LEESBURG PRESBYTERIAN CHURCH**

Phone: 703-777-4163

[www.LeesburgPresbyterian.org](http://www.LeesburgPresbyterian.org)

Summer Office Hours: Monday thru Thursday: 9-2; Friday: 9-12

**\*HYMN 387**

*Savior, Like a Shepherd Lead Us*

BRADBURY

**\*CHARGE AND BENEDICTION**

**\*CONGREGATIONAL RESPONSE**

*Christ Beside Me*

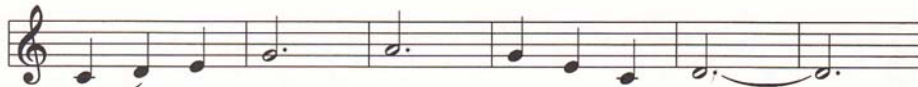
BUNESSAN

2166

**Christ Beside Me**



1., 3. Christ be - side me, Christ be - fore me,  
2. Christ on my right hand, Christ on my left hand,



Christ be - hind me — King of my heart; \_\_\_\_\_  
Christ all a - round me — shield in the strife; \_\_\_\_\_



Christ with - in me, Christ be - low me,  
Christ in my sleep - ing, Christ in my sit - ting,



Christ a - bove me — nev - er to part. \_\_\_\_\_  
Christ in my ris - ing — light of my life. \_\_\_\_\_

WORDS: *St. Patrick's Breastplate*; adapt. by James Quinn  
MUSIC: Trad. Gaelic melody

BUNESSAN  
55.54 D

**SUNDAY SCHEDULE**  
**Worship at 10:00 a.m..**

ASSISTING:

Ushers: Nancy Vanzandt and David Parsons

Liturgist: Brenda Bengtson

Today's flowers are given by Dave, Sheri and Brooke Nelson in thanksgiving for our many blessings

## Sunday, July 24, 2011

### OPPORTUNITIES FOR THIS WEEK

<b>Sun.</b>	<b>July 24</b>	<b>10:00 a.m.</b>	<b>Worship</b>
<b>Tues.</b>	<b>July 26</b>	<b>7:30 p.m.</b>	<b>Session</b>
<b>Thur.</b>	<b>July 28</b>	<b>10:00 a.m.</b>	<b>Bridge</b>

**To Our Visitors** Whether you have visited with us before or are visiting today for the first time, we hope you experience the open-hearted hospitality of the Living Christ in our community of faith as we gather in his name for Sabbath worship. Because it is our desire to get to know you better and to be able to communicate with you about our life and ministry, we appreciate you filling out the attendance register. One becomes a member of a Presbyterian church in one of three ways: 1) Profession of Faith, 2) Re-affirmation of Faith, 3) by Letter of Transfer from a previous church.

**Children and Balcony Pews!!** Because the safety of our young children matters deeply to all of us, we strongly encourage that little ones do not sit in the front row of the balcony. Help us keep children safe by choosing another pew for children under 10.

**Child Care** In *Noah's Ark*, infants and toddlers (birth to 6 years) are cared for by two professional caregivers from 9:45 to 11:15.

**Share-the-Care** There will be no Share-the-Care during June and July. Children up to age 6 are welcome in *Noah's Ark*.

**Summer Schedule** We will have one worship at 10:00 a.m. throughout the summer. The office will be open 9 - 2 Monday - Thursday, and 9 - 12 on Fridays.

**Prayer Chain** Prayer requests are confidentially and conscientiously lifted to God by members of the Prayer Chain every day. Please email [prayer@lpcva.org](mailto:prayer@lpcva.org) if you have a special need or concern you wish to share through a praying church.

**In Our Prayers** we remember: Bob Ahrens, The Eisenhart family, the Gayek/Hood family, Hal Glovier, Mary Elizabeth Williams. Our prayers are constant for the women and men of the Armed Forces and their families.

**Fuller Center Bike Adventure** On August 11 the cyclists with the Fuller Center Bike Adventure will be staying with us for the night. We will provide dinner that evening and breakfast the next morning as well as providing the building for them to sleep in. They will depart on August 12. We need volunteers to provide food. More information to follow. This year's ride is Washington to Washington; they departed Seattle, WA on June 12. See [www.fullercenter.org](http://www.fullercenter.org) for more information about this interesting and worthy program.

**Food For Thought** A new look for Manna is coming this fall--the Deacons are looking to employ a person who loves to cook delicious, healthy, simple meals for large crowds of hungry folks! We want to network. Pay is negotiable. Menus will be worked out with a Deacon team. We are hoping and praying that someone in our congregation might just know the perfect person. Talk to Debbie Parsons or Deacons Sandy Gasperini, or Julie Koochagian if you know of someone.

**A Message from Loudoun Interfaith Relief:** *In the summer we increase the amount of food we give to our families with school aged children because they often rely on the school lunch and breakfast programs to help feed their children. This however has emptied our shelves. Loudoun Interfaith Relief's resources and food supply are at an all time low. We have never turned anyone away since 1991 because of lack of food. Please help us to continue to help Loudoun's most needy. Please place non-perishable food items in the tub at the bottom of the stairs to fellowship hall.*

The Endowment Committee is offering **scholarships to college students** for the 2011-2012 school year. Monies for these scholarships are made available through church trusts. Applications are on the table outside the church office and must be returned by August 1st.

**Do you have a key to the church?** If so, please do one of the following:

- 1.) return it to the office if you do not use it regularly. You can always come in and get one if you need one for something specific.
- 2.) call or email the office to say that you have one and need to keep it activated.

We will be deactivating keys in the near future, so please attend to this request as soon as you are able.

# *Replenish* Save the Date!

**FALL BACK INTO LIFE, AWAKENING YOUR YEARNING FOR GOD**

## **A CENTERING MINI-RETREAT**

**Saturday, September 17, 9:00 a.m. – 12:00 Noon**

Our relationship with God changes and transforms our lives. There is in many of us a deep desire for God, to be in God's presence, to know God personally. Yet our best efforts at prayer, church school, and worship often do not seem to give us what we're looking for. We find them routine or lifeless.

In this fall retreat, we will explore how Jesus ministers to us during times of stress, fragmentation, loneliness, busyness and inner pain. We will come to experience the kind of spiritual strength that leads to a life of more authentic joy, amazing beauty and magnificent service.

This retreat is open to anyone. Session members, Deacons, and Adult Education and Church School teachers are encouraged to attend.

Guided by: Rev. Dr. Donelda "Donnie" Cook,  
Associate Vice President for Student Development and Director of  
the Counseling Center at Loyola University

Cost: Free

**Child Care Available**

Contact Pastor Audrey (703-777-4163, [dce@lpcva.org](mailto:dce@lpcva.org)) or  
Sharon Brown (703-726-8829, [sharonbrown@live.com](mailto:sharonbrown@live.com)) with  
questions or for more details.

*Reflect*

**VBS Thank You!** We would like to thank the following restaurants who helped support our Vacation Bible School: Jersey Mike's, Fort Evans Road; Eggspectations, Village Market Blvd; Flame Kabob, Village Market Blvd; Ledo's Pizza, Fort Evans Road; Chick-fil-A, Dulles Town Center. Next time you visit one of these restaurants, identify yourself as a member of LPC and thank them for their support.



# Thank You!!

What a blessed Vacation Bible School...the children learned about God and had a blast Shaking it Up!!

**Be ready** for God  
**Give happily** to God  
**Believe fully** in Jesus  
**Remember** Jesus often  
**Celebrate** God forever

The closing ceremony was the most memorable moment...to see over 60 children sing *Give Thanks and Shake it Up* (let's get cooking, God is making something new in me) made it all come together. Without the presence and commitment of our LPC VBS volunteers, the Shake it Up café would not have been possible. It was a true blessing working with a great cast of volunteers and I look forward to doing it again next year.

Pastor Audrey

**DEACON POINTS OF CONTACT:** Our Deacons are always available to take calls regarding any concerns you may have — illnesses, deaths, personal circumstances, joys — just about anything.

## ELDERS

### 2012

Jim Barnes  
 Jason Hovda  
 William Marsh  
 Jane Wallace

### 2013

Stuart Brown  
 Pam Poisson  
 Holly Rhodes  
 Kathi Stone

### 2014

Chris Folk  
 Randy Jackson  
 Steve Potter  
 Doug Sweeney

## DEACONS

Rebecca Caprio  
 Tom Gurney  
 Julie Koochagian  
 Shirley Pearson

Sandy Gasperini  
 Kim Goldstein  
 Carla Holland  
 Caroline Milne

Glenna Bingham  
 Tom Chase  
 Babe McGuire  
 Nancy Vanzandt

## CHURCH STAFF

Pastor  
 Director, Christian Education  
 Director of Music  
 Youth Group Coordinator  
 Administrator  
 Prayer Chain  
 Business Manager  
 Nursery

Deborah Parsons  
 Audrey Wiggins  
 Becky Sweet  
 Kristin Petersen  
 Cindy Hollister  
 Peggy Moats  
 Julie Koochagian  
 Bonnie Wiedenmeyer, Patricia Medina

[revdeb@lpcva.org](mailto:revdeb@lpcva.org)  
[dce@lpcva.org](mailto:dce@lpcva.org)  
[music@lpcva.org](mailto:music@lpcva.org)  
[kpetersen415@gmail.com](mailto:kpetersen415@gmail.com)  
[office@lpcva.org](mailto:office@lpcva.org)  
[prayer@lpcva.org](mailto:prayer@lpcva.org)  
[bookkeeper@lpcva.org](mailto:bookkeeper@lpcva.org)