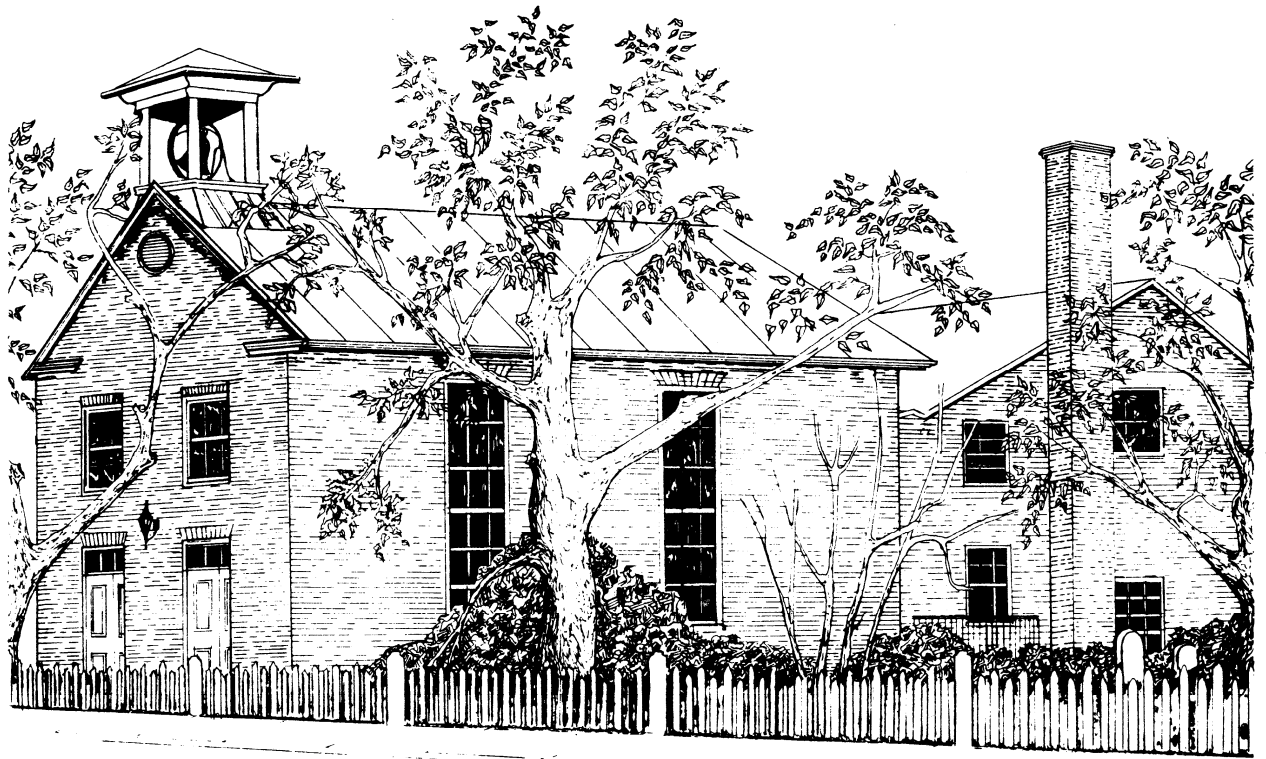


LEESBURG PRESBYTERIAN CHURCH

LEESBURG, VIRGINIA

1804



July 31, 2011

*Standing on the past . . .
Reaching for the future*

Presbyterian Church (U.S.A)

18th Sunday of Ordinary Time

10:00 a.m.

When the church bell is rung let us be silent for worship.

**Please stand if able*

PRELUDE

I Will Call upon the Lord

arr. Medema

THE GREETING OF GOD'S PEOPLE AND ANNOUNCEMENTS

Wherever you may be in the journey of faith, Leesburg Presbyterian Church welcomes you. We are a community where persons from different faith backgrounds and understandings find unity in the wide embrace of Christ's love and call to service. If you are passing through, we extend God's blessing to you as you continue on your way. If you are seeking a home, we invite you to join us in the adventure of serving Jesus Christ in a challenging world.

***INTROIT**

We Bring the Sacrifice of Praise

Kirk Dearman

**We bring the sacrifice of praise into the house of the Lord.
We bring the sacrifice of praise into the house of the Lord.
And we offer up to you the sacrifices of thanksgiving;
And we offer up to you the sacrifices of joy.**

***CALL TO WORSHIP**

from Psalm 34

At all times I will bless the Lord, Whose praise shall ever be in my mouth.
I will glory in the Lord; Let the humble hear and rejoice.
Proclaim with me the greatness of the Lord; Let us exalt the name of the Lord together.

***HYMN 487**

When Morning Gilds the Skies

LAUDES DOMINI

PRAYER OF CONFESSION (Unison)

**When we are impatient and dissatisfied, forgive us, patient God.
When we are ungrateful and complacent, forgive us, generous God.
When we ignore the needs of others, forgive us, compassionate God.
When we ignore our own needs, forgive us, healing God.
When we are quick to judge others, forgive us, merciful God.**

(silence is kept)

Amen.

WORDS OF FORGIVENESS

***CONGREGATIONAL RESPONSE 485**

To God Be the Glory

Crosby/Doane

**To God be the glory, great things He hath done!
So loved He the world that He Gave us His Son
Who yielded His life an atonement for sin,
And opened the life gate that all may go in.**

**Praise the Lord, praise the Lord,
Let the earth hear His voice!
Praise the Lord, praise the Lord,
Let the people rejoice!**

**O come to the father through Jesus the Son,
And give God the glory, great things He hath done.**

***THE PASSING OF THE PEACE**

TIME WITH THE CHILDREN

OFFERING

OFFERTORY *Praise Him! Praise Him!* Arr. Dalton

***THE DOXOLOGY #592**

***OFFERTORY PRAYER**

We dedicate our offerings, not alone for the good they can accomplish and the mission they will support, but also because giving helps us to gain perspective on what really matters. May our lives and all we give perform the works of God. Build us up in love for one another and for all your children everywhere.

SCRIPTURE LESSON Selection from Romans 8 Pew Bible Pg. 157

SERMON Rev. Deborah Dodson Parsons

SACRAMENT OF THE LORD'S SUPPER

THE INVITATION

SOLO *The Invitation* Chapman/Moore
Bonnie Beal, soloist

GREAT PRAYER OF THANKSGIVING

The Lord be with you.

And also with you.

Lift up your hearts.

We lift them to the Lord.

Let us give thanks to the Lord our God.

It is right to give our thanks and praise.

THE WORDS OF INSTITUTION

THE SHARING OF THE MEAL

When you receive the bread, please wait until the pastor leads us to partake of it together. You are invited to partake of the cup as you are individually ready. The larger slice of bread on each plate is gluten free.

THE LORD'S PRAYER

LEESBURG PRESBYTERIAN CHURCH

Phone: 703-777-4163

www.LeesburgPresbyterian.org

Summer Office Hours: Monday thru Thursday: 9-2; Friday: 9-12

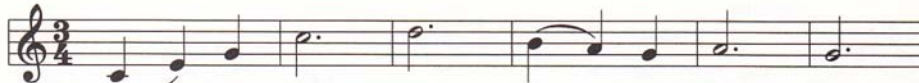
***HYMN**

Christ Beside Me

BUNESSAN

2166

Christ Beside Me



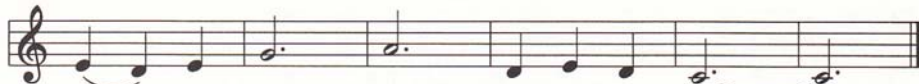
1., 3. Christ be - side me, Christ be - fore me,
2. Christ on my right hand, Christ on my left hand,



Christ be - hind me — King of my heart; _____
Christ all a - round me — shield in the strife; _____



Christ with - in me, Christ be - low me,
Christ in my sleep - ing, Christ in my sit - ting,



Christ a - bove me — nev - er to part. _____
Christ in my ris - ing — light of my life. _____

WORDS: *St. Patrick's Breastplate*; adapt. by James Quinn
MUSIC: Trad. Gaelic melody

BUNESSAN
55.54 D

***CHARGE AND BENEDICTION**

***POSTLUDE**

SUNDAY SCHEDULE
Worship at 10:00 a.m..

ASSISTING:

Ushers: Bob and Linda Duffey

Liturgist: Ben Franklin

Today's flowers are given by Ron and Jan Aronson in honor of their 60th wedding anniversary on 7/27/11.

Sunday, July 31, 2011

OPPORTUNITIES FOR THIS WEEK

Sun.	July 31	10:00 a.m.	Worship
		11:15 a.m.	Finance Committee Meeting
Tues.	Aug 2	7:00 p.m.	Deacons
Thur.	Aug 4	10:00 a.m.	Bridge

To Our Visitors Whether you have visited with us before or are visiting today for the first time, we hope you experience the open-hearted hospitality of the Living Christ in our community of faith as we gather in his name for Sabbath worship. Because it is our desire to get to know you better and to be able to communicate with you about our life and ministry, we appreciate you filling out the attendance register. One becomes a member of a Presbyterian church in one of three ways: 1) Profession of Faith, 2) Re-affirmation of Faith, 3) by Letter of Transfer from a previous church.

Children and Balcony Pews!! Because the safety of our young children matters deeply to all of us, we strongly encourage that little ones do not sit in the front row of the balcony. Help us keep children safe by choosing another pew for children under 10.

Child Care In *Noah's Ark*, infants and toddlers (birth to 6 years) are cared for by two professional caregivers from 9:45 to 11:15.

Share-the-Care There will be no Share-the-Care during the summer. Children up to age 6 are welcome in *Noah's Ark*.

Summer Schedule We will have one worship at 10:00 a.m. throughout the summer. The office will be open 9 - 2 Monday - Thursday, and 9 - 12 on Fridays.

Prayer Chain Prayer requests are confidentially and conscientiously lifted to God by members of the Prayer Chain every day. Please email prayer@lpcva.org if you have a special need or concern you wish to share through a praying church.

In Our Prayers we remember: Bob Ahrens, The Eisenhart family, Hal Glovier, Mary Elizabeth Williams. Our prayers are constant for the women and men of the Armed Forces and their families.

Fuller Center Bike Adventure On August 11 the cyclists with the Fuller Center Bike Adventure will be staying with us for the night. We will provide dinner that evening and breakfast the next morning as well as providing the building for them to sleep in. They will depart on August 12. We need volunteers to provide food. More information to follow. This year's ride is Washington to Washington; they departed Seattle, WA on June 12. See www.fullercenter.org for more information about this interesting and worthy program.

TWO-HOUR MISSION OUTREACH OPPORTUNITY IN LEESBURG Do you have two hours to spare on occasional Sunday afternoons, from 2:00 – 4:00? One time only or help as often as you like. Volunteers with the **Grace-to-Go Feeding Ministry** prepare and package a simple meal at the Deli South restaurant in Leesburg. Members of LPC have participated already and it really is a simple way that you can help provide a healthy meal to people in need within our community. LPC eventually hopes to be assigned the 1st Sunday of the month on a regular basis (LPC has committed to six Sundays a year). But until then, we hope to establish a small group of volunteers to help occasionally on the 2nd, 3rd, and 4th Sundays of the month. If you feel called to care for God's people in this way, call Kathi Stone (703-777-7194).

Newsletter Deadline We will be publishing a newsletter in mid-August to kick off the fall. Please submit articles covering events through September by Tuesday, August 2.

A Message from Loudoun Interfaith Relief: *In the summer we increase the amount of food we give to our families with school aged children because they often rely on the school lunch and breakfast programs to help feed their children. This however has emptied our shelves. Loudoun Interfaith Relief's resources and food supply are at an all time low. We have never turned anyone away since 1991 because of lack of food. Please help us to continue to help Loudoun's most needy.* Please place non-perishable food items in the tub at the bottom of the stairs to fellowship hall.

The Endowment Committee is offering **scholarships to college students** for the 2011-2012 school year. Monies for these scholarships are made available through church trusts. Applications are on the table outside the church office and must be returned by August 1st.

Replenish Save the Date!

FALL BACK INTO LIFE, AWAKENING YOUR YEARNING FOR GOD

A CENTERING MINI-RETREAT

Saturday, September 17, 9:00 a.m. – 12:00 Noon

Our relationship with God changes and transforms our lives. There is in many of us a deep desire for God, to be in God's presence, to know God personally. Yet our best efforts at prayer, church school, and worship often do not seem to give us what we're looking for. We find them routine or lifeless.

In this fall retreat, we will explore how Jesus ministers to us during times of stress, fragmentation, loneliness, busyness and inner pain. We will come to experience the kind of spiritual strength that leads to a life of more authentic joy, amazing beauty and magnificent service.

This retreat is open to anyone. Session members, Deacons, and Adult Education and Church School teachers are encouraged to attend.

Guided by: Rev. Dr. Donelda "Donnie" Cook,
Associate Vice President for Student Development and Director of
the Counseling Center at Loyola University

Location: Fellowship Hall, Leesburg Presbyterian Church

Cost: Free

Child Care Available

Contact Pastor Audrey (703-777-4163, dce@lpcva.org) or
Sharon Brown (703-726-8829, sharonbrown@live.com) with
questions or for more details.

Reflect

Recycle Your Printer Cartridges Do you recycle your ink/toner cartridges from your computer? If so, keep it up. If not, donate them to the church. Just drop them on the desk in the front office and we'll take care of the rest. The church receives \$2 credit per cartridge we recycle and will use the proceeds for office supplies. We saved \$80 on office supplies during the first half of 2011 through ink/toner recycling!

Do you have a key to the church? If so, please do one of the following:

1.) return it to the office if you do not use it regularly. You can always come in and get one if you need one for something specific.

2.) call or email the office to say that you have one and need to keep it activated.

We will be deactivating keys in the near future, so please attend to this request as soon as you are able.

DEACON POINTS OF CONTACT: Our Deacons are always available to take calls regarding any concerns you may have — illnesses, deaths, personal circumstances, joys — just about anything.

ELDERS

2012

Jim Barnes
Jason Hovda
William Marsh
Jane Wallace

2013

Stuart Brown
Pam Poisson
Holly Rhodes
Kathi Stone

2014

Chris Folk
Randy Jackson
Steve Potter
Doug Sweeney

DEACONS

Rebecca Caprio
Tom Gurney
Julie Koochagian
Shirley Pearson

Sandy Gasperini
Kim Goldstein
Carla Holland
Caroline Milne

Glenna Bingham
Tom Chase
Babe McGuire
Nancy Vanzandt

Pastor
Director, Christian Education
Director of Music
Youth Group Coordinator
Administrator
Prayer Chain
Business Manager
Nursery

CHURCH STAFF

Deborah Parsons revdeb@lpcva.org
Audrey Wiggins dce@lpcva.org
Becky Sweet music@lpcva.org
Kristin Petersen kpetersen415@gmail.com
Cindy Hollister office@lpcva.org
Peggy Moats prayer@lpcva.org
Julie Koochagian bookkeeper@lpcva.org
Bonnie Wiedenmeyer, Patricia Medina